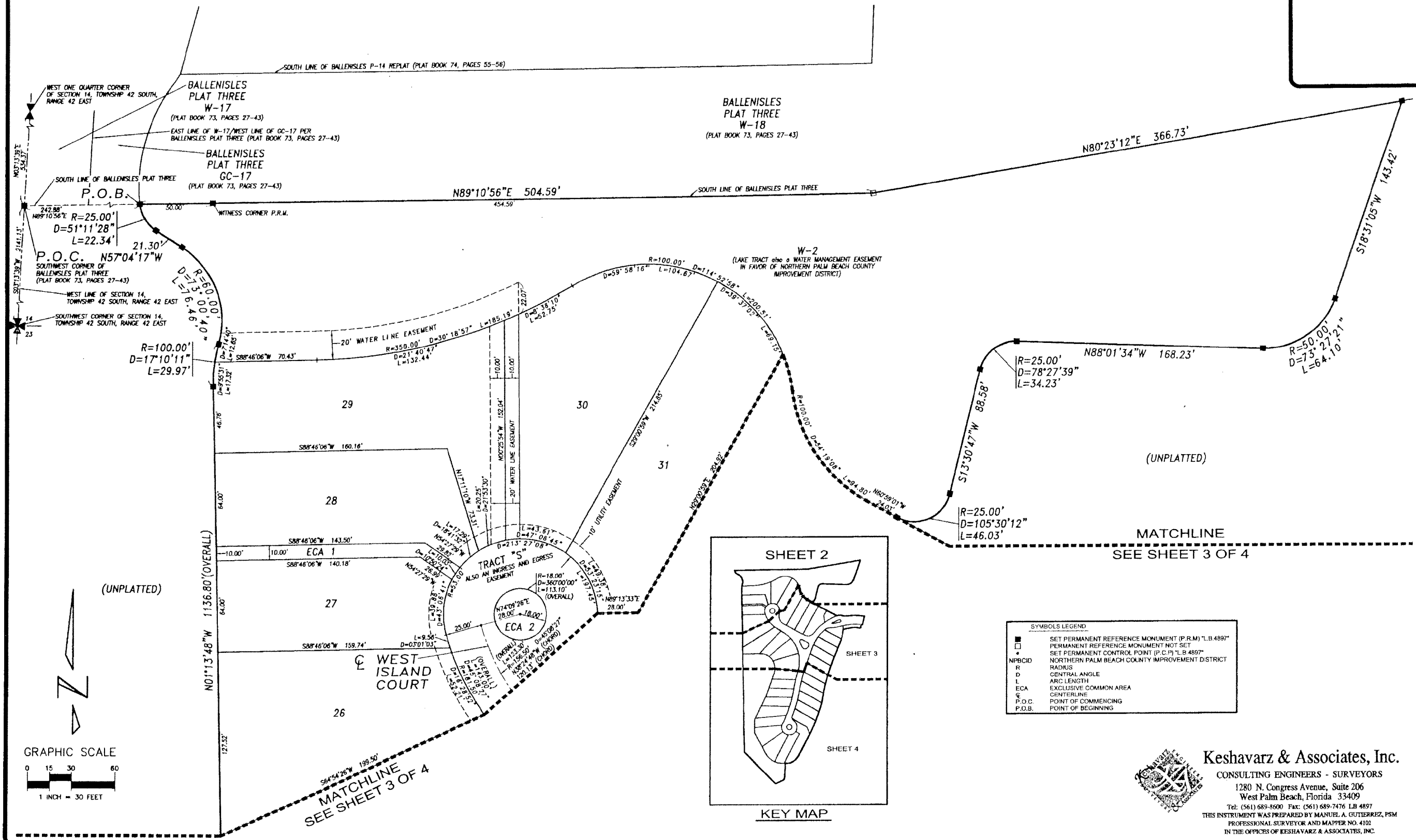


BALLENISLES POD 15

A PARCEL OF LAND LYING WITHIN THE SOUTHWEST QUARTER OF SECTION 14, TOWNSHIP 42 SOUTH, RANGE 42 EAST, CITY OF PALM BEACH GARDENS, PALM BEACH COUNTY, FLORIDA
SHEET 2 OF 4
APRIL 2001

101

STATE OF FLORIDA
COUNTY OF PALM BEACH
THIS PLAT WAS FILED FOR RECORD AT _____ THIS _____ DAY OF _____ A.D. 2001, AND DULY RECORDED IN PLAT BOOK _____ ON PAGES _____ AND _____
DOROTHY WILKEN, CLERK
CIRCUIT COURT,
BY _____ DC



SYMBOLS LEGEND

■	SET PERMANENT REFERENCE MONUMENT (P.R.M.) "L.B. 4897"
□	PERMANENT REFERENCE MONUMENT NOT SET
+	SET PERMANENT CONTROL POINT (P.C.P.) "L.B. 4897"
NPBCID	NORTHERN PALM BEACH COUNTY IMPROVEMENT DISTRICT
R	RADIUS
D	CENTRAL ANGLE
L	ARC LENGTH
ECA	EXCLUSIVE COMMON AREA
⊕	CENTERLINE
P.O.C.	POINT OF COMMENCING
P.O.B.	POINT OF BEGINNING

Keshavarz & Associates, Inc.
CONSULTING ENGINEERS - SURVEYORS
1280 N. Congress Avenue, Suite 206
West Palm Beach, Florida 33409
Tel: (561) 689-8600 Fax: (561) 689-7476 LB 4897
THIS INSTRUMENT WAS PREPARED BY MANUEL A. GUTIERREZ, PSM
PROFESSIONAL SURVEYOR AND MAPPER NO. 4102
IN THE OFFICES OF KESHAVARZ & ASSOCIATES, INC.